



KONICA MINOLTA

AccurioPro Compile

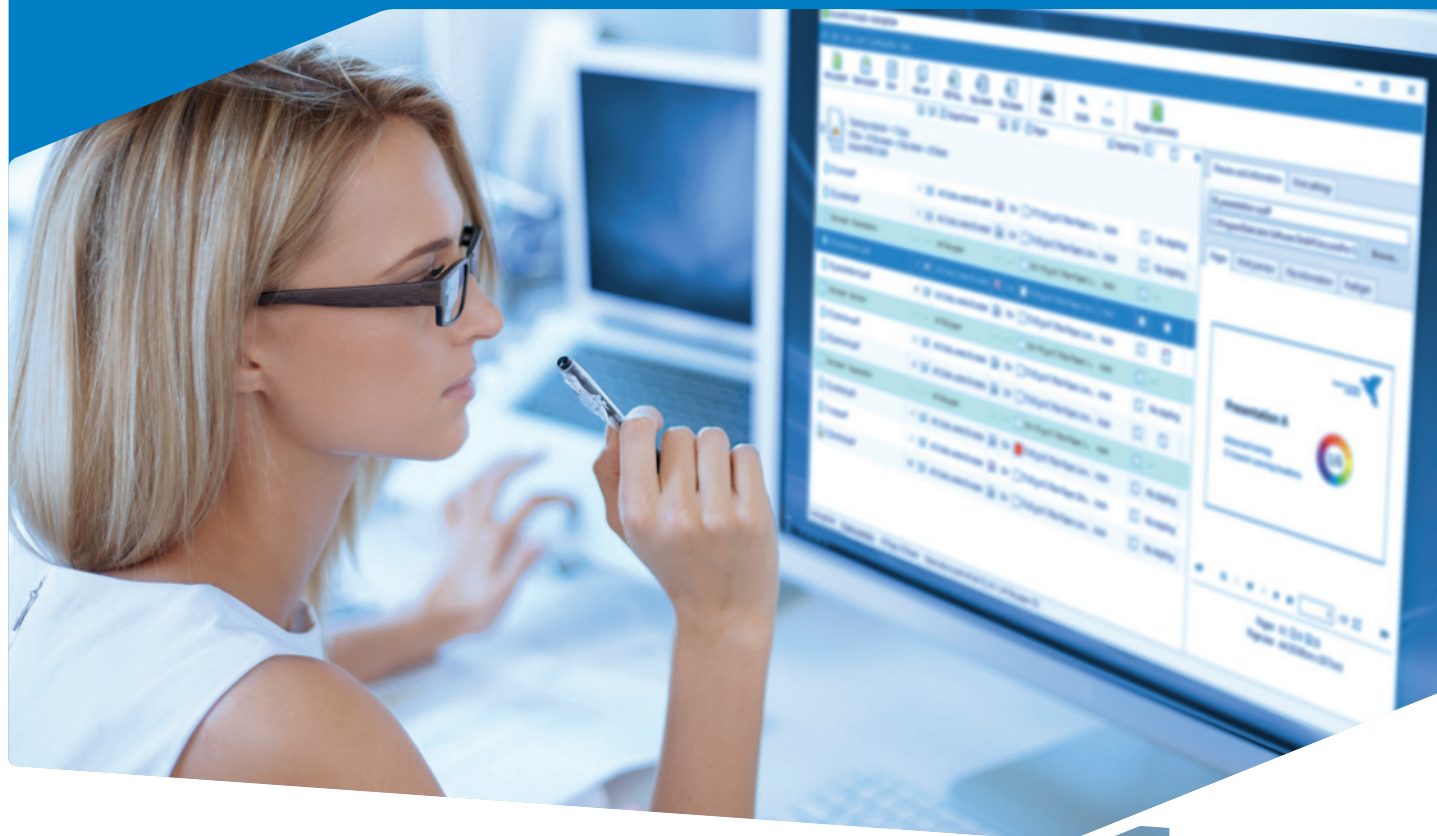
Category



Print
Automation

Characteristics

- Templates
- Job ticket
- Automatic setup & inline finishing



AccurioPro
Compile



MAKE AUTOMATIC UPDATING OF YOUR MANUALS A BREEZE

You regularly need to print manuals composed of various PDF files, for instance cover, instructions, warranty, and a contact page? Most likely, the contents of your documents change slightly every now and then, for example when a product is relaunched. But as the content of such documents is almost always supplied by various sources from different departments, this can turn into a complex and time-consuming task.

In this case, take advantage of AccurioPro Compile by creating a print project just once and using it again and again, even when the content changes. This is easy and straightforward because your print projects will be linked to the source documents that may be filed in various folders in your company network. When changes become necessary to one or more of your PDF files, you won't need to adjust your print project. Instead, each time a print command is given, only the latest file version is retrieved and inserted automatically. So you can be sure to print only up-to-date documents – and without any manual intervention whatsoever.

If several authors are working on one print project, they can maintain their contents independently of each other. AccurioPro Compile lets you conveniently compile PDF files from a large variety of sources into one final document.

AccurioPro Compile is also your best assistant when it comes to printing training materials, conference handouts or any other recurring print projects, for which the setup stays the same while the content of the document changes.

KEY FEATURES

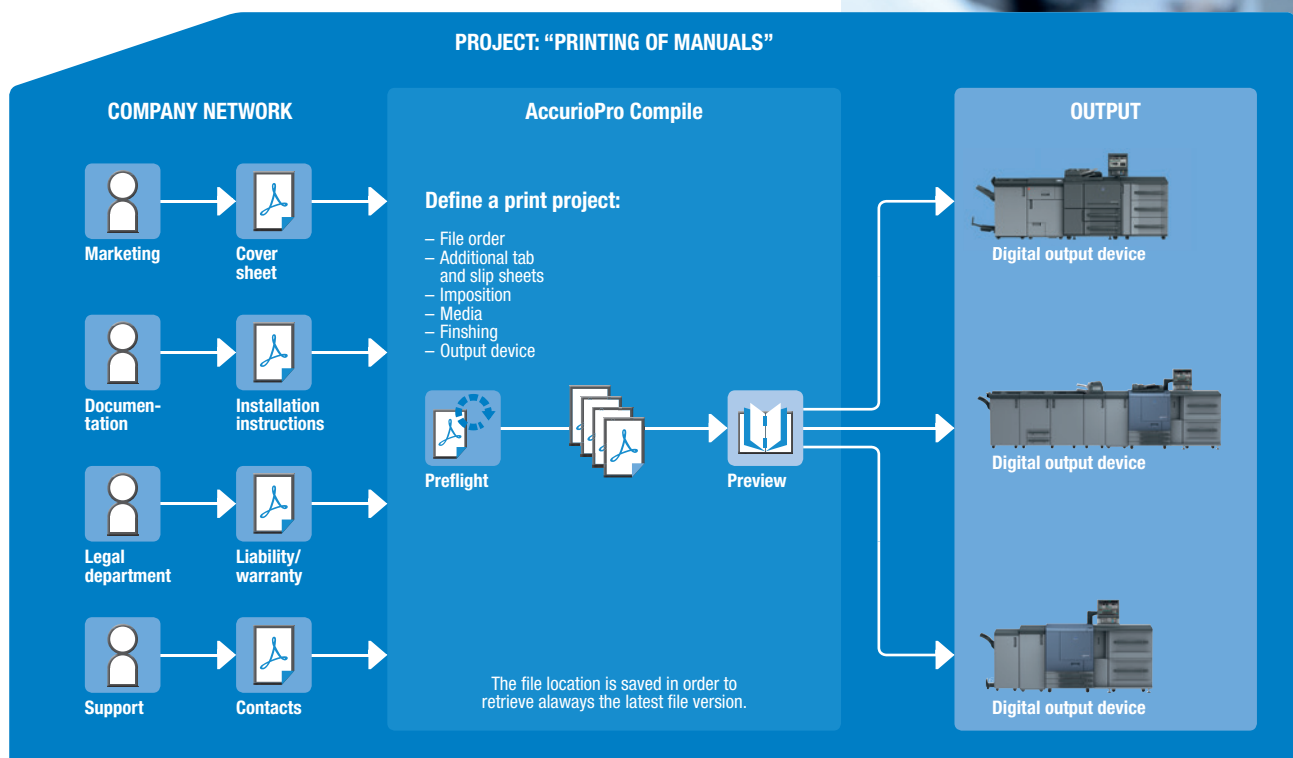
Templates

- **Save print projects and reuse them at any time:** The order of the PDF files, the position of slip sheets and tab sheets with their labels, the print settings and finishing for documents as well as differing print settings for individual PDF files – simply everything you have defined in your print project is saved and can be reused at any time.
- **Save the project structure as template:** If your print projects always have the same structure, you can save your project structure as a template. Now, you only have to fill the template with new content.
- **Create professionally structured print projects:** If desired, you can insert tab sheets into your print project and print individual labels on the tabs. You can also insert slip sheets. This facilitates separating different topics or including already printed documents.
- **Convenient editing of projects:** Easily drag and drop PDF files into your project, preview the inserted files, and – if necessary – remove the preview window and the settings bar from the program window to use them in separate windows. A clutter-free user interface helps you stay focused.

Automatic setup & inline finishing:

- **Customised documentation:** Create custom documentation to react to individual customer requests. Select from a print project only those files that you want to compile individually for a customer.
- **Mixed formats:** If your print project consists of PDF files with different paper formats, you can select whether these formats are to be retained for the output or scaled to a specified output format.
- **Always up-to-date content:** The contents of your documents are regularly updated? No problem! Make the required changes in the source documents. Save the changed PDF files back in the same place under the same name and the updated information is immediately available in your print project.

WORKFLOW



TECHNICAL SPECIFICATIONS

SYSTEM REQUIREMENTS

Operating systems	Windows 10 Pro (64) Windows 8.1 Pro (64) Windows 7 Pro with SP1 (64)
Memory	8 GB
Hard disk space	250 GB
Screen resolution	1680 x 1050 pixels
Supported languages	Englisch, French, German, Italian, Spanish

The support and availability of the listed specifications and functionalities varies depending on operating systems, applications and network protocols as well as network and system configurations.

